

noisu
Rain
gay art magazine

Vol. 5 · Issue II · 015

SPRING 05



Handwritten signature and date: 1/15/15

Vol. 5 · Issue II · 015

EDITOR & ADDITIONAL LOGOS+ART : ©E. HIRANO

EU-JIN LOH

DANIEL MARCEL SCHMUDE-STERLING

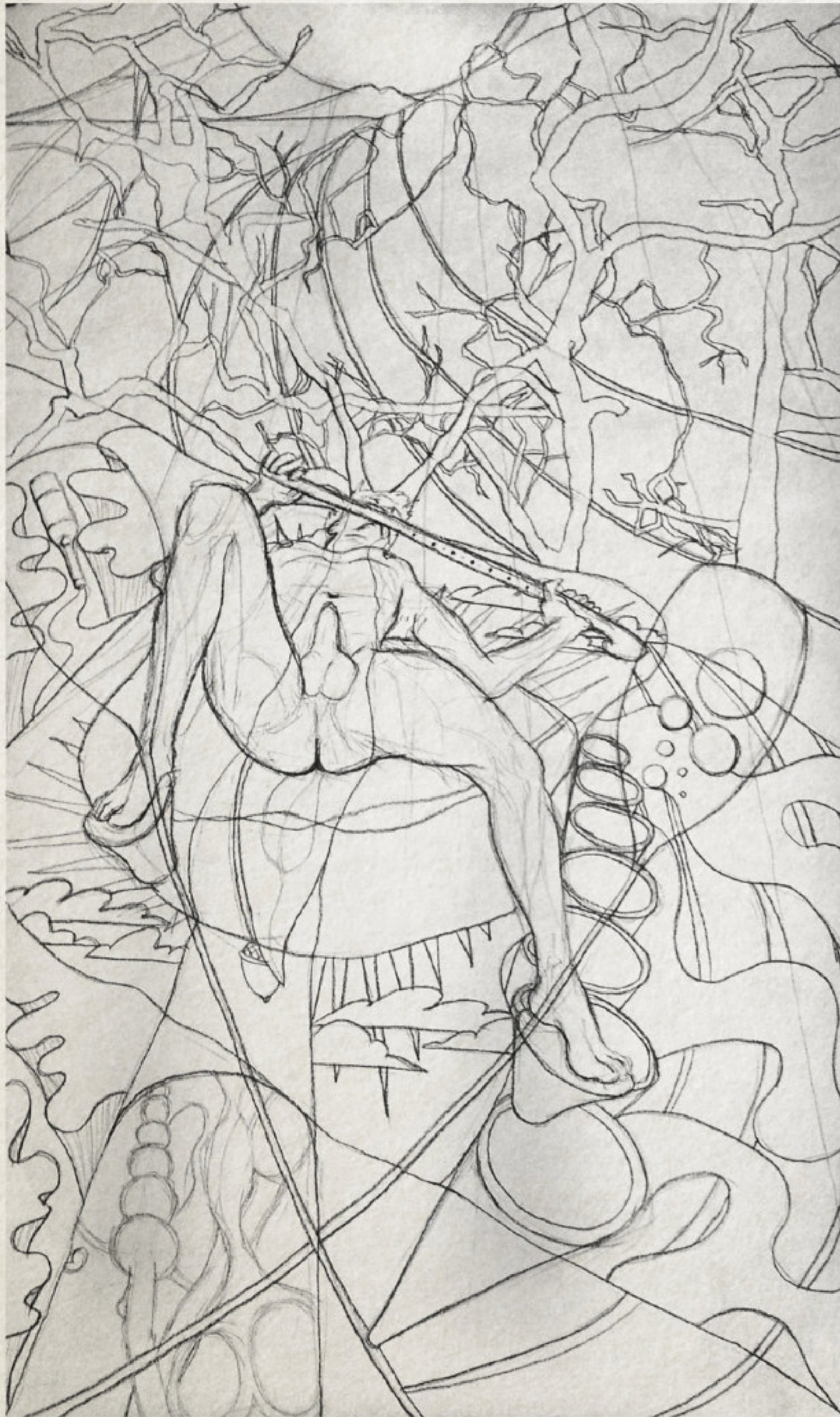
VILELA VALENTIN

None of the images, designs, logos and writing material in this publication belong to the public domain. All the artistic work are Copyright by their legal owners © 2015 and it is used under respective permission of each artist for this publication only. Copying, altering, displaying or redistribute any of the artwork contained in this publication, in any format or any medium is strictly PROHIBITED © 2015.



THE RENAISSANCE OF MY ART





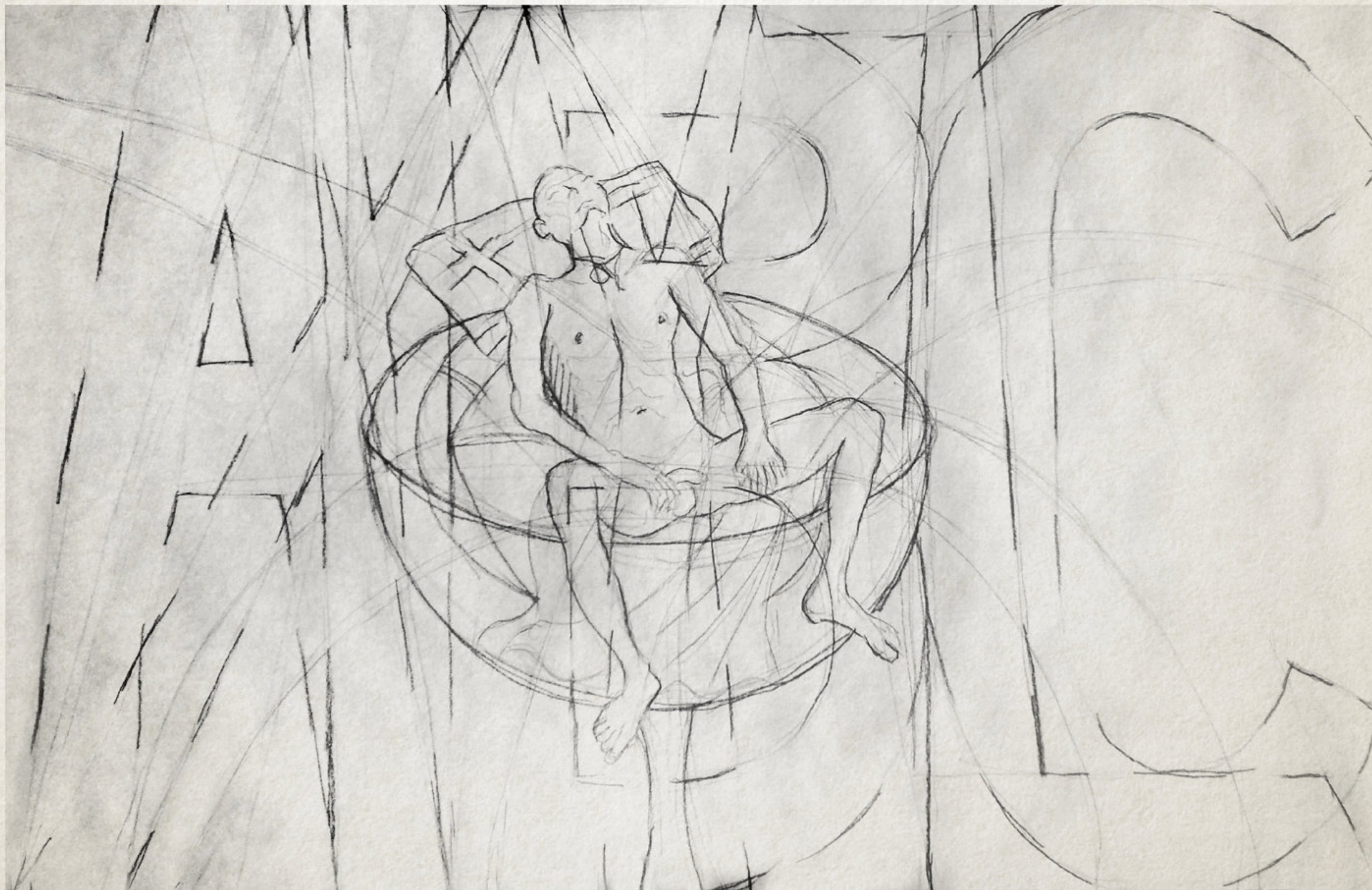
WAIHEKE ISLAND FAUN



SIAMESE COY



NIALL-ISM



FRUITFUL FONT TOSS

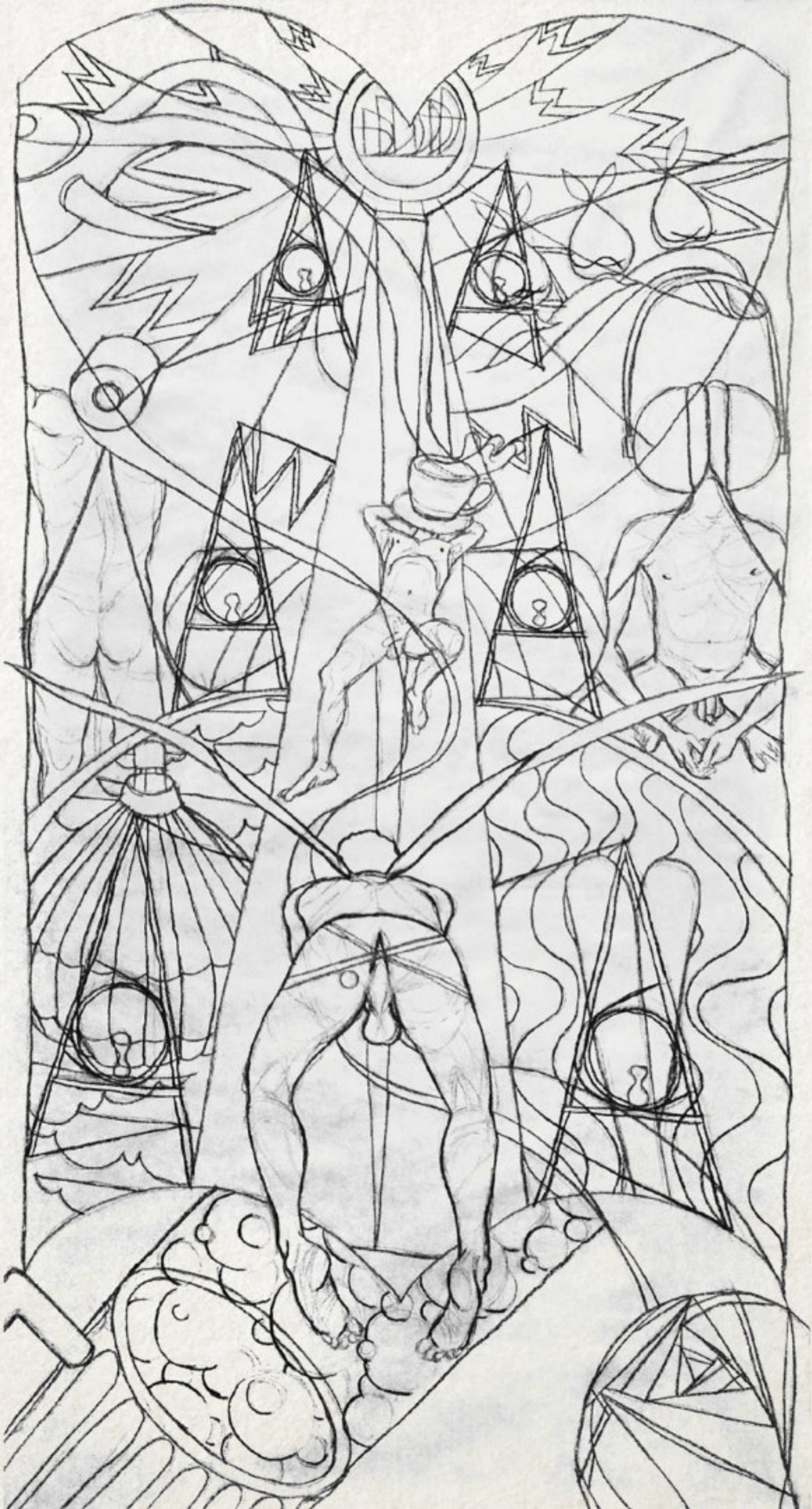
CUM PIG JESUS II





OUTBACK OASIS





M.D.M.A. - METHINKS DRUNKEN MAD AVARICE II



THE RENAISSANCE OF MY ART BEGAN IN EARNEST IN MID 2012 AFTER A COUPLE BOUTS OF COMMUNITY ART COURSES AND A YEAR HIATUS IN BETWEEN WITH THE LOSS OF A LONG TERM JOB AND THE PASSING OF MY LAST SURVIVING PARENT. HENCE A DRIVE WAS BORN TO LEAVE BEHIND A CREATIVE LEGACY TO MAKE MY MARK ON THIS EARTH. THIS LED ME TO PURSUE LIFE DRAWING THAT I'VE PARTAKEN OF FROM MY HIGHSCHOOL TEENS TO DESIGN SCHOOL 20'S LIKE A SPORADIC OLD LOVER.

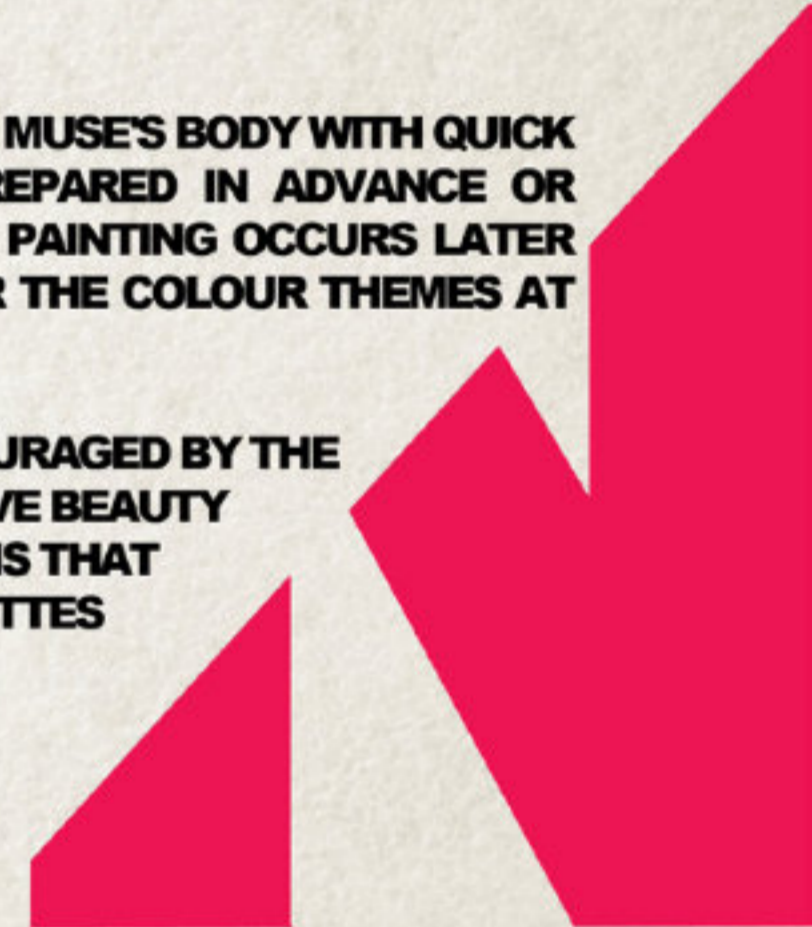
UNTIL MY FORAY INTO GRINDR AND ONLINE DATING SITES TO SOURCE MY OWN MALE MUSES I HAD MAINLY DRAWN THE FEMALE FIGURE THROUGHOUT MY LIFE DRAWING EXPERIENCE SO WAS EAGER TO FOCUS SOLELY ON WHAT I HAD ALWAYS WANTED TO DO FROM THE BEGINNING BUT NEVER SERIOUSLY CONSIDERED.

THE IDEAS FOR MY ART DERIVE IN PART WITH MY MALE MODELS AS THE ROOT THEME THEN PAIRING THE VOYEURISTIC SEXUAL TENSION WITH THE MODEL'S SEXUAL FANTASIES, EXPERIENCES AND GENERAL FACTS GLEANED OFF MY CONVERSATION WITH THEM. I CREATE A SELF PORTRAIT OF SORTS BY PROXY USING THE MODEL'S POSE TO DRIVE MY LOVE OF SPATIAL CONSTRUCTION LIKE 'BUILDING A FORT' FROM EVERYDAY ITEMS BORNE FROM MY TECHNICAL DRAWING TRAINING AND PENCHANT FOR SET DESIGN. IN A WAY MY ART IS A DIALOGUE IN HOW I'VE NAVIGATED THROUGH CASUAL HOOK-UPS AND TRANSFORMED THE EXPERIENCES INTO FINDING SOME INTIMATE MEANING THAT ENRICHES BOTH PARTIES THROUGH LIFE DRAWING. IN CREATING OPPORTUNITIES AND ROLES TO EXPLORE OUR BOUNDARIES ON DIFFERENT LEVELS AND FACILITATING FANTASIES, IT GENERATES A SYNERGY OF PURPOSE AND WILLINGNESS TO UNCOVER SIDES OF US THAT LIE LATENT. I HAVE A PREDILECTION FOR USING RANDOM DISPARATE ELEMENTS SUCH AS MY INTEREST IN POPULAR CULTURE AND A HOARDING SENSIBILITY THAT INTERCONNECT IN AN IDIOSYNCRATIC ORDER IN MY WORLD WHICH I TAKE DELIGHT IN DISCOVERING AND AM A ROMANTIC AT HEART WITH MY BELIEF IN THE SERENDIPITOUS COMPLETION OF A PIECE THAT EMERGE IN THEIR OWN GOOD TIME.

MY INSPIRATION ORIGIN POINT WITH LIFE DRAWING STARTED WITH USING CHALK PASTELS & CHARCOAL TO CAPTURE LIGHT IN THE TRADITION OF DEGAS MESHING WITH MY RELATIVELY RECENT DELVE INTO PAINTING MY DRAWINGS LIKE AN 'ADULT COLOURING BOOK' WHICH SUMMARIZES MY APPRECIATION OF SCHIELE'S GRITTY POSES AND KLIMT'S RICHLY PATTERNED COLOUR LANGUAGE. MY PAINTING COULD BE SEEN AS A FORM OF HYBRID SCREENPRINTING SINCE I LOVE THE FAUVIST DIMENSION VIVID COLOUR CAN EVOKE JUXTAPOSED AGAINST EACH OTHER. I WOULD DESCRIBE MY STYLE AS 'ALICE IN WONDERLAND POP ART EXPRESSIONISM' SINCE I ENJOY THE WHIMSY AND HAPHAZARD NATURE OF MY AVENUE OF ART RIDDLED WITH FLIPPANT PUNS AND CODED SENSUALITY. I'VE TRIED TO UNLEARN THE WAY THAT PAINTING SHOULD BE DONE AND GRAVITATING TO HOW I NATURALLY PAINT. I RETAIN MY FETISH FOR SIMPLE BROWN PAPER AS A CANVAS AND CHARCOAL TO DRAW WITH.

THE PROCESS STARTS WITH GETTING USED TO MY NEW MUSE'S BODY WITH QUICK SKETCHING, THEN ONTO LONGER POSES EITHER PREPARED IN ADVANCE OR DERIVED FROM THE QUICK SKETCHES AND THEN THE PAINTING OCCURS LATER AFTER THE MODEL HAS GONE WHEN I CAN MULL OVER THE COLOUR THEMES AT LESISURE.

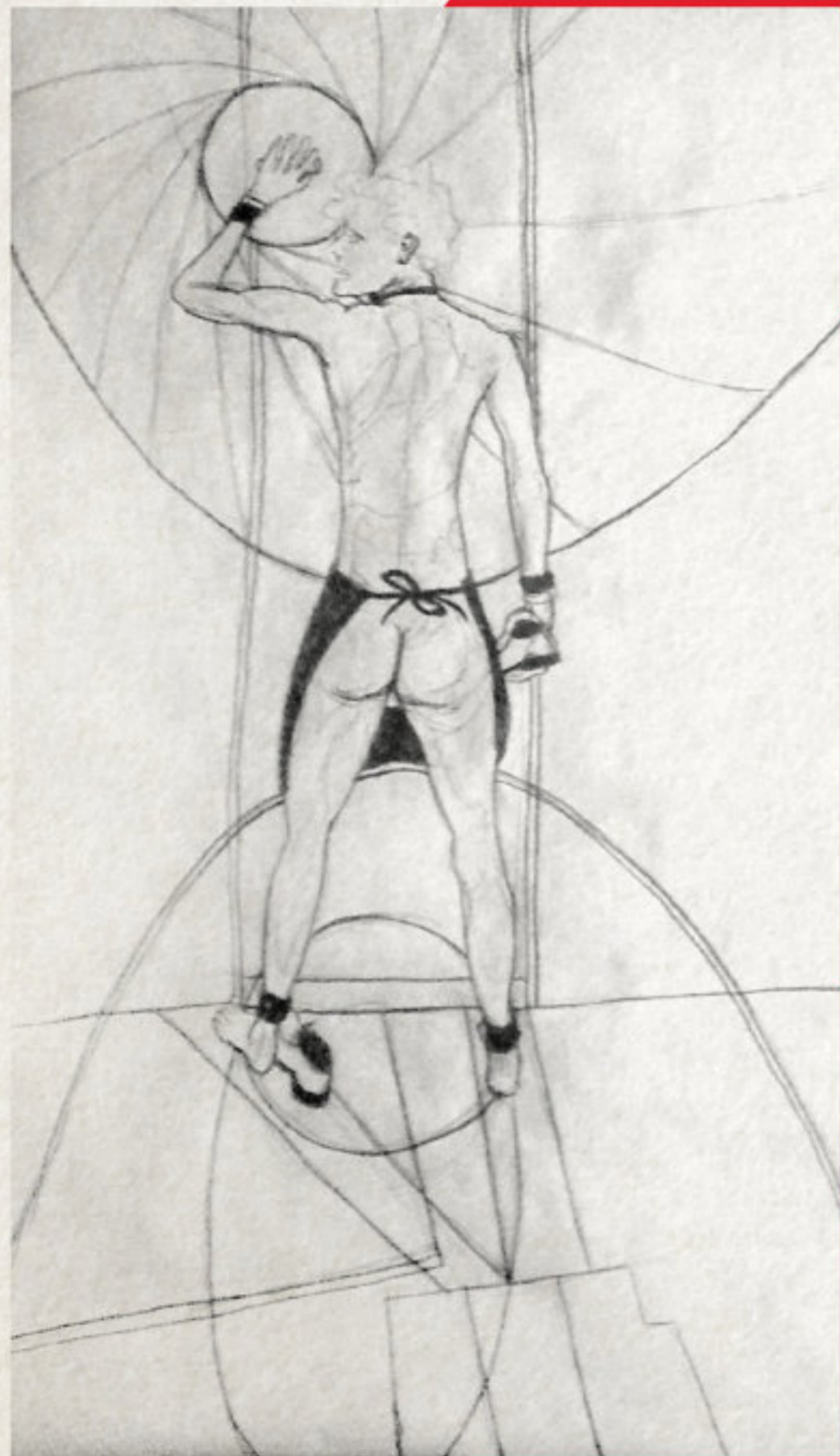
DESPITE MY WORK NOT BEING PROLIFIC I'M STILL ENCOURAGED BY THE NAKED GENEROSITY OF MY MODELS AND THE NARRATIVE BEAUTY FOUND IN THE QUIET PASSION-WROUGHT COMPOSITIONS THAT COALESCE INTO BEING, ENTICED BY THE UNIQUE VIGNETTES BURIED IN EACH CREATIVE MOMENT AND STROKE.



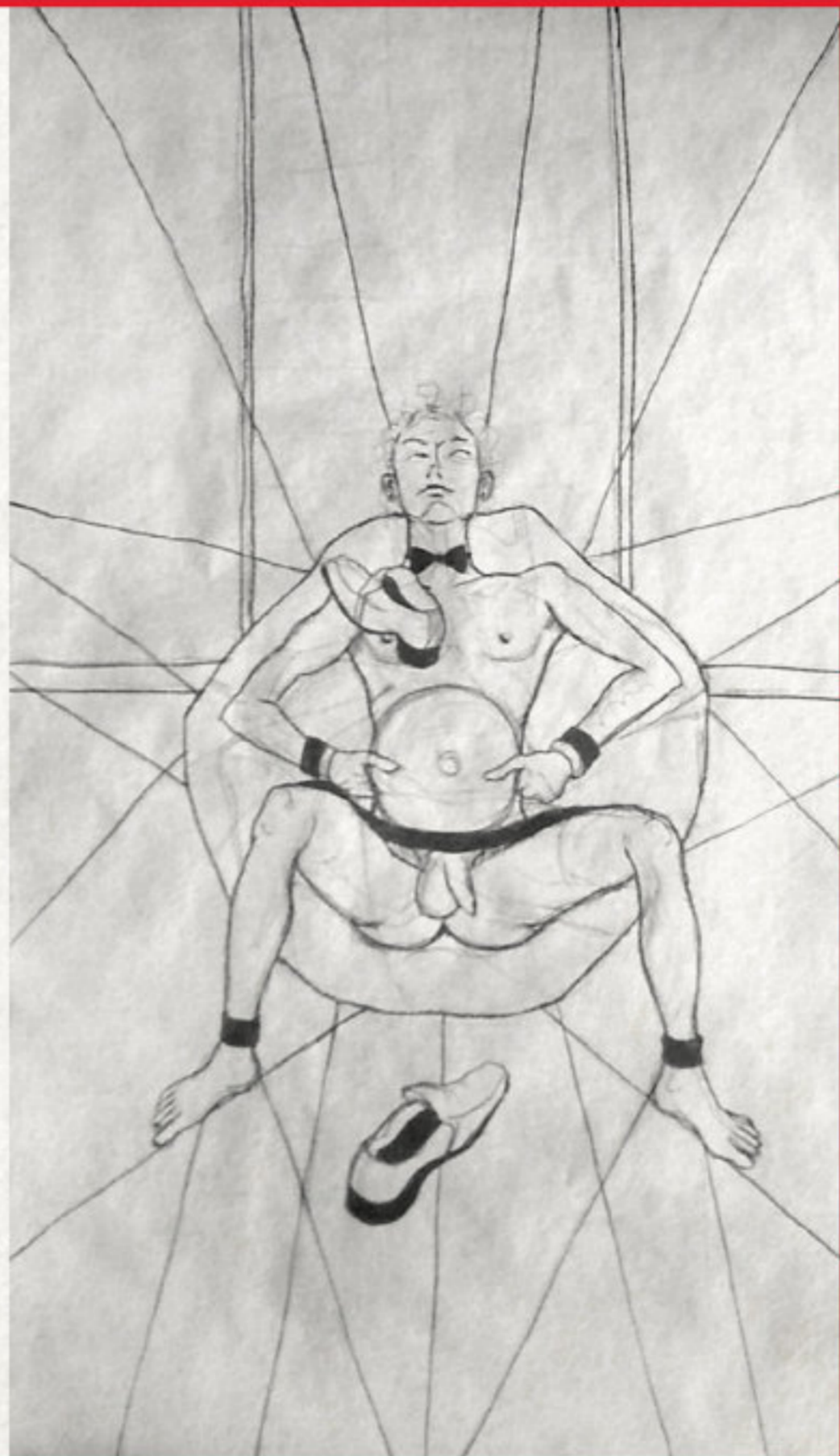
STREAM OF CONSCIOUSNESS



SKYFALL TRIBUTE



SHAKEN



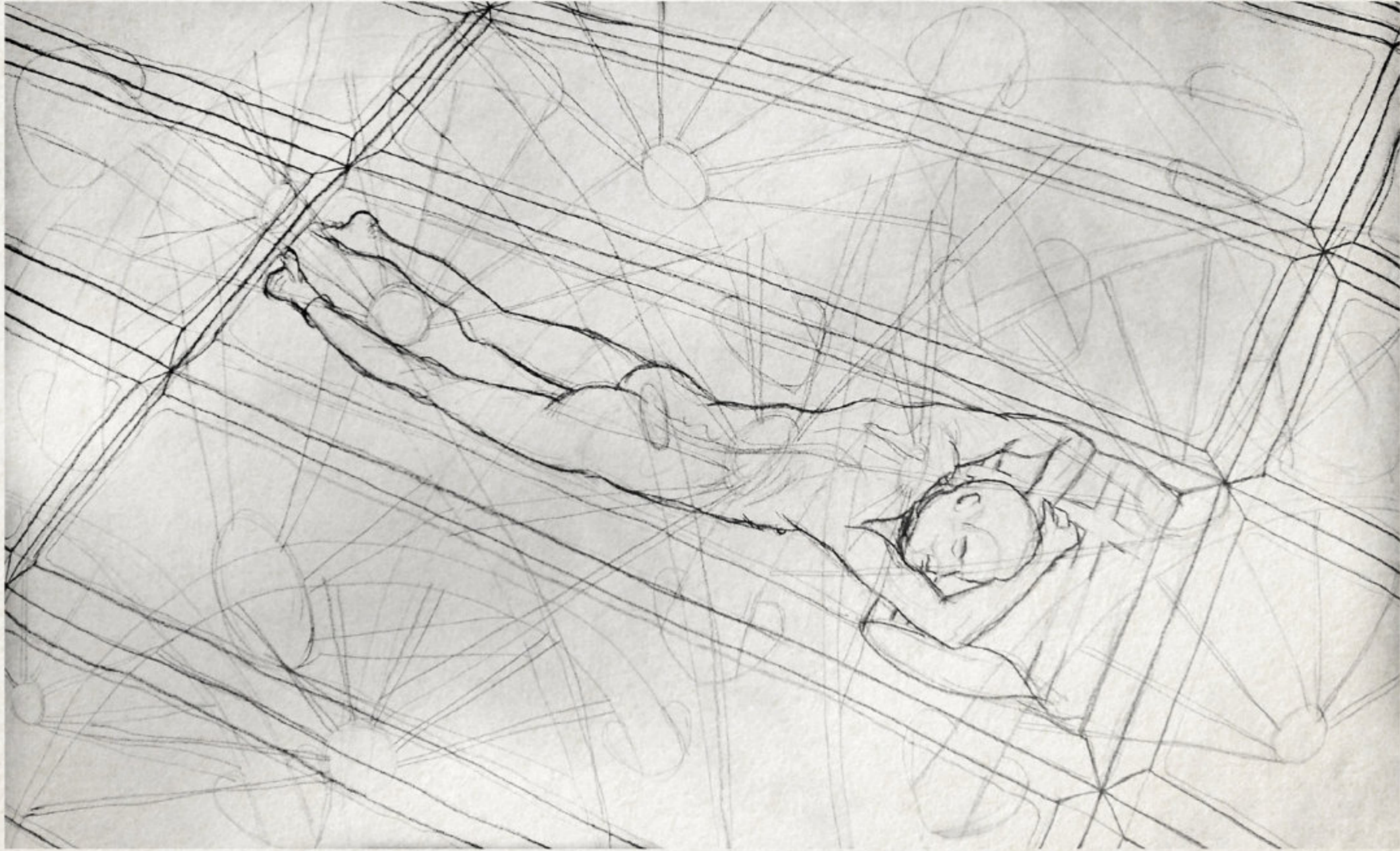
KNOT



STIRRED



UNTITLED SKETCH
MARK A



NURTURE NATURE II

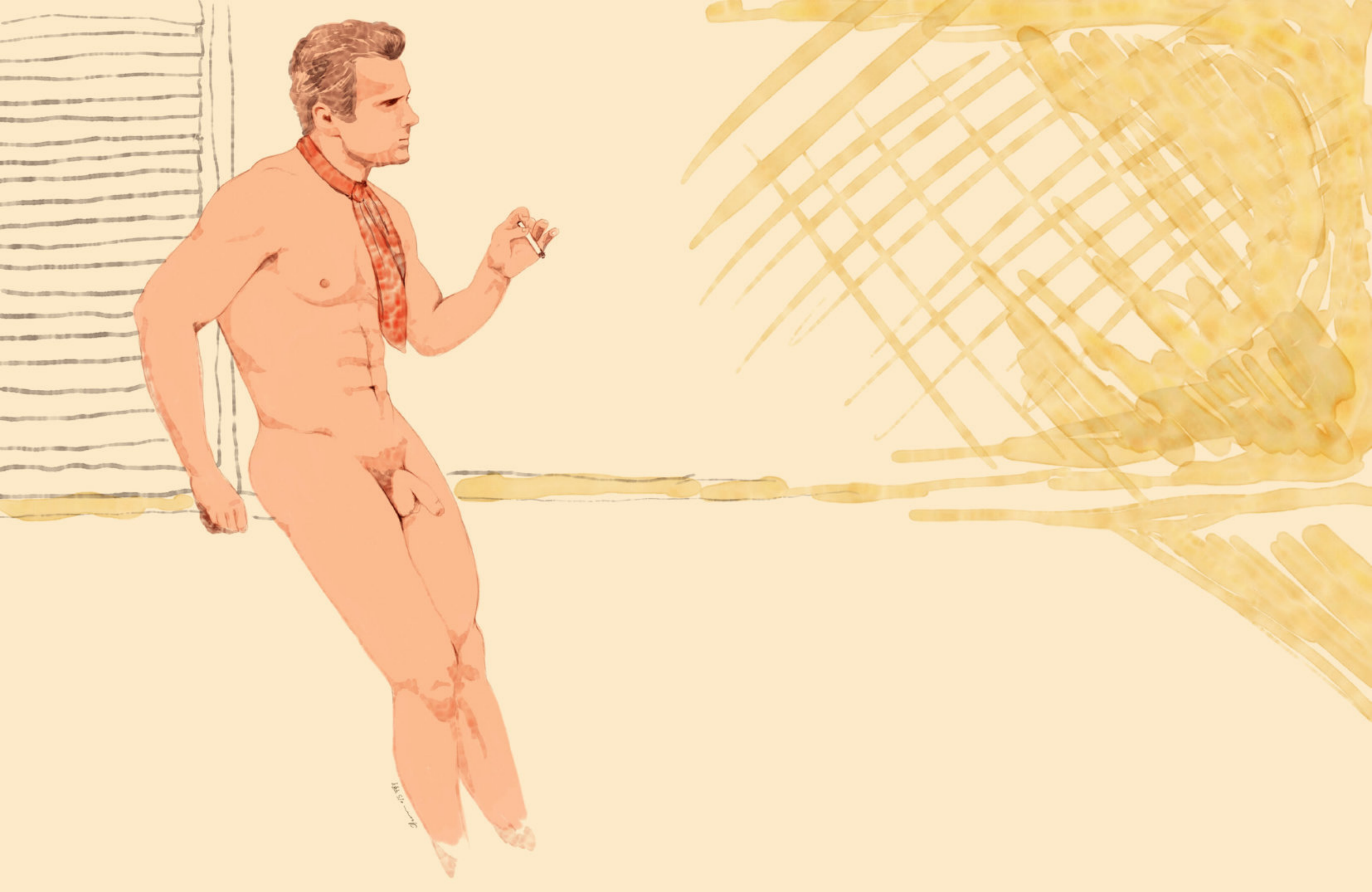
PORTAGE ROAD YELLOW II



EU-JIN LOH

WWW.MODELMAYHEM.COM/PANDERJIN

© **EU-JIN LOH**



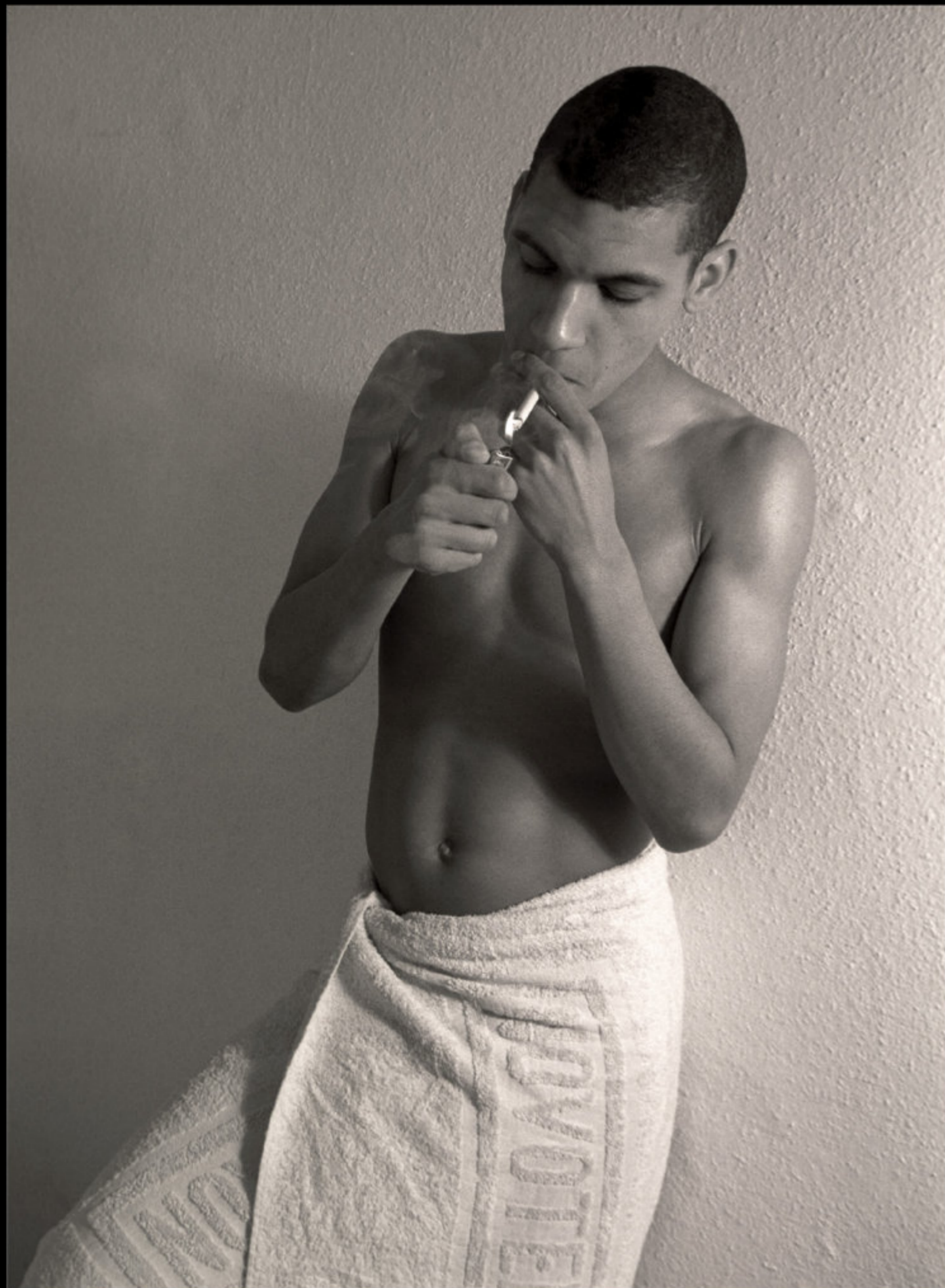


DANIEL

MARCEL

SCHIMMELDE-

STERLING



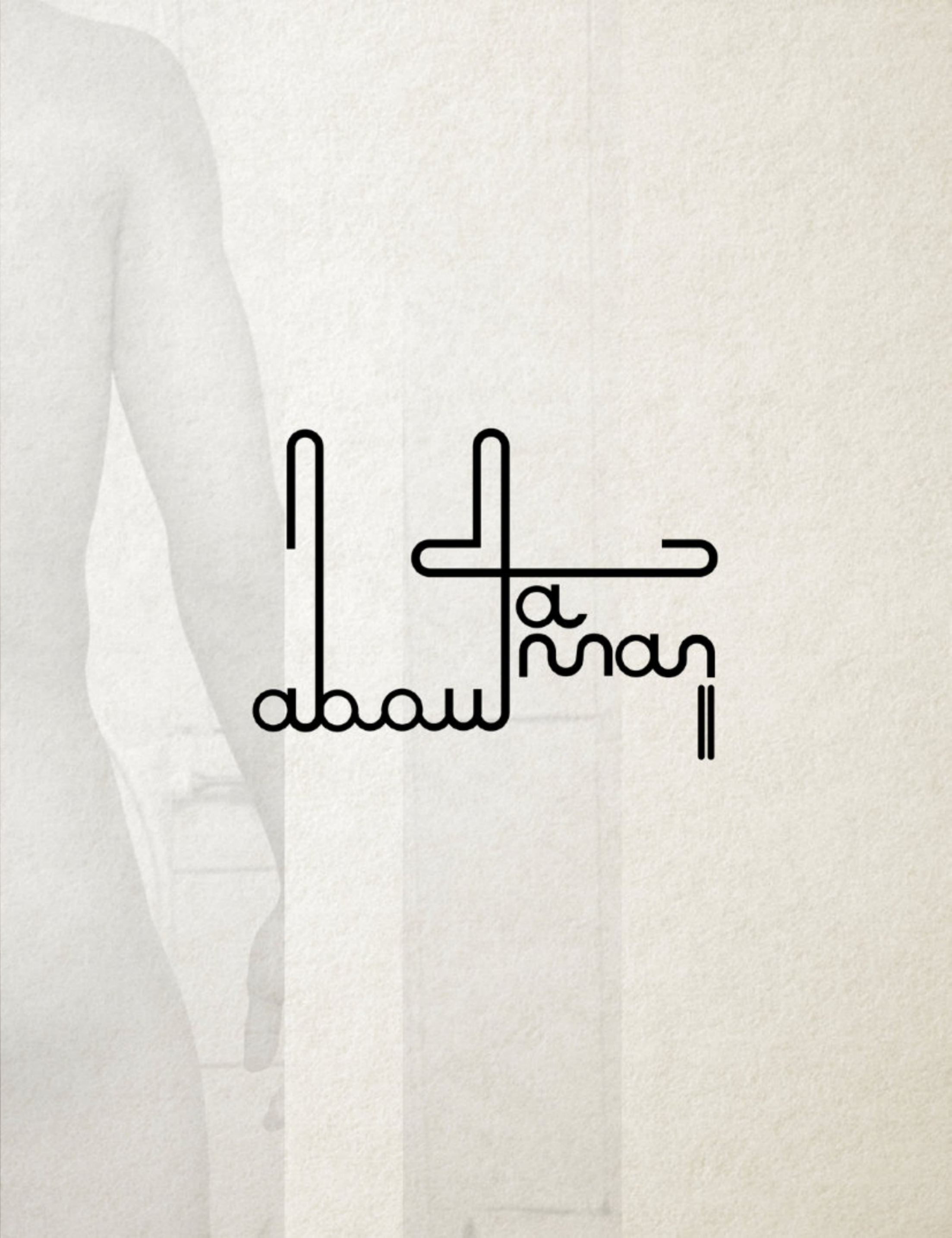
adidas

die Feder





h
e
u
s



abaw
a
naya
||

დაქვეყნდა



The Puskas
man





www. |||



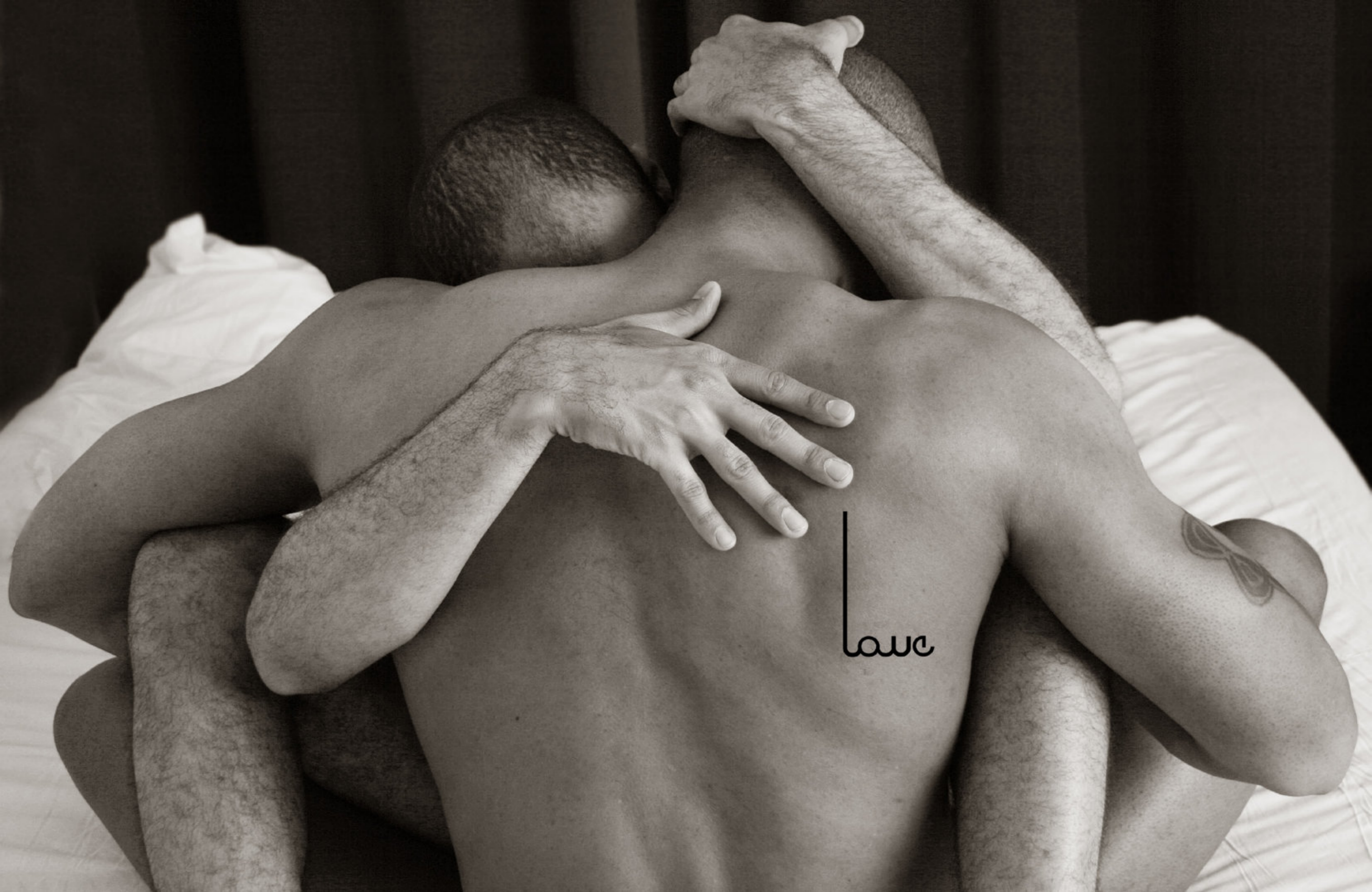


audax



مسلم
connection





lowe



© DANIEL MARCEL SCHMUDE-STERLING

WWW.FACEBOOK.COM/DANIELSCHMUDEPHOTOGRAPHY

[HTTP://DANIELSCHMUDEPHOTOGRAPHY.TUMBLR.COM](http://DANIELSCHMUDEPHOTOGRAPHY.TUMBLR.COM)





VILELA
VALENTIN

Almost Hot
Pencil on paper 21.0 cm x 29.7 cm





Male chest
Pencil on paper 21.0 cm × 29.7 cm



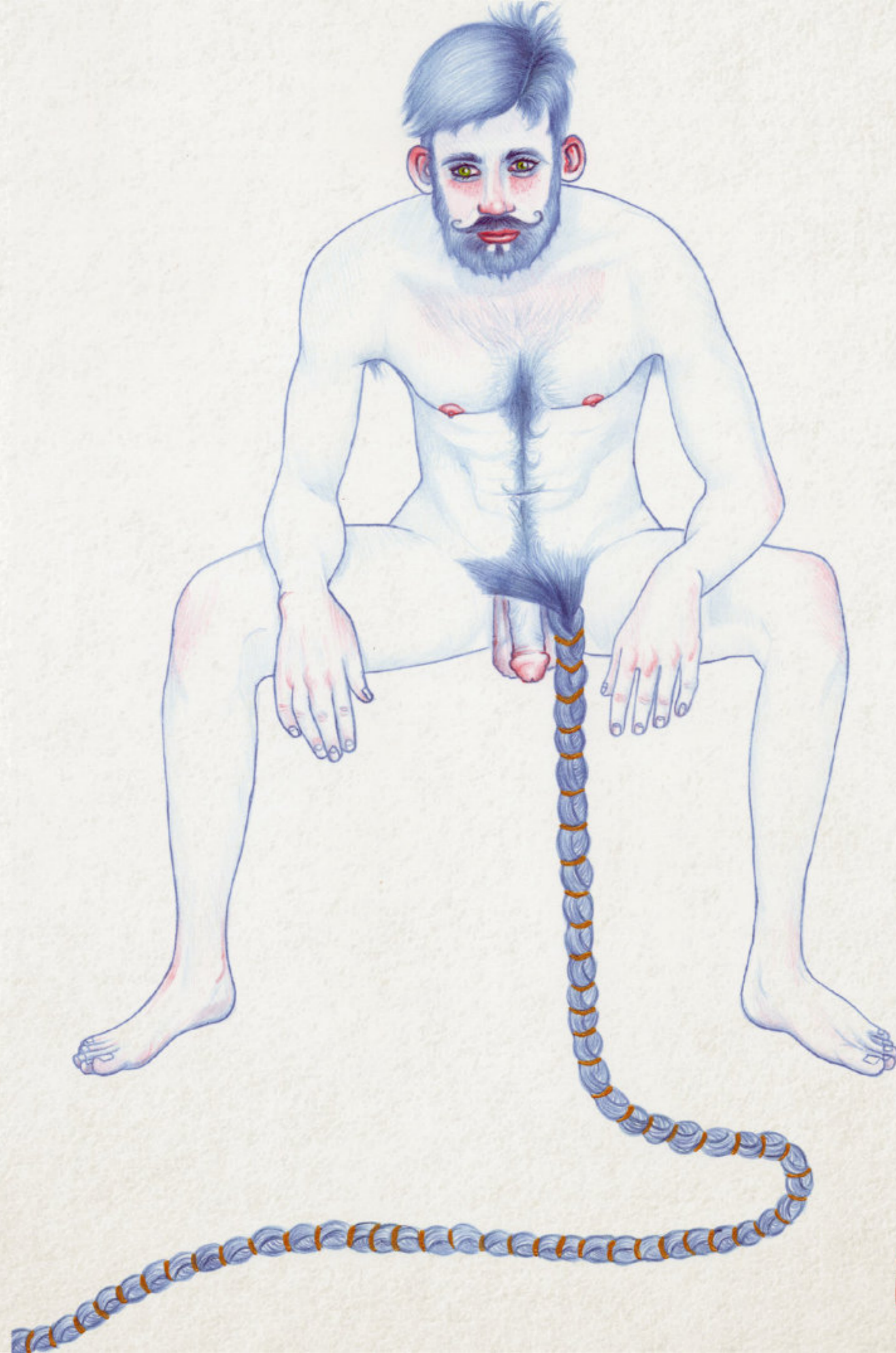


The plane eater
Pencil and guache 21.0cm×29.7cm

Blue in red

Pencil on Fabriano paper 21.0 cm × 29.7 cm





Rapunzel

Pencil on paper 21.0 cm × 29.7 cm



Nordic man

Pencil and guache 21.0 cm x 29.7 cm



Hermes Trimegistus

Pencil on paper 21.0 cm × 29.7 cm

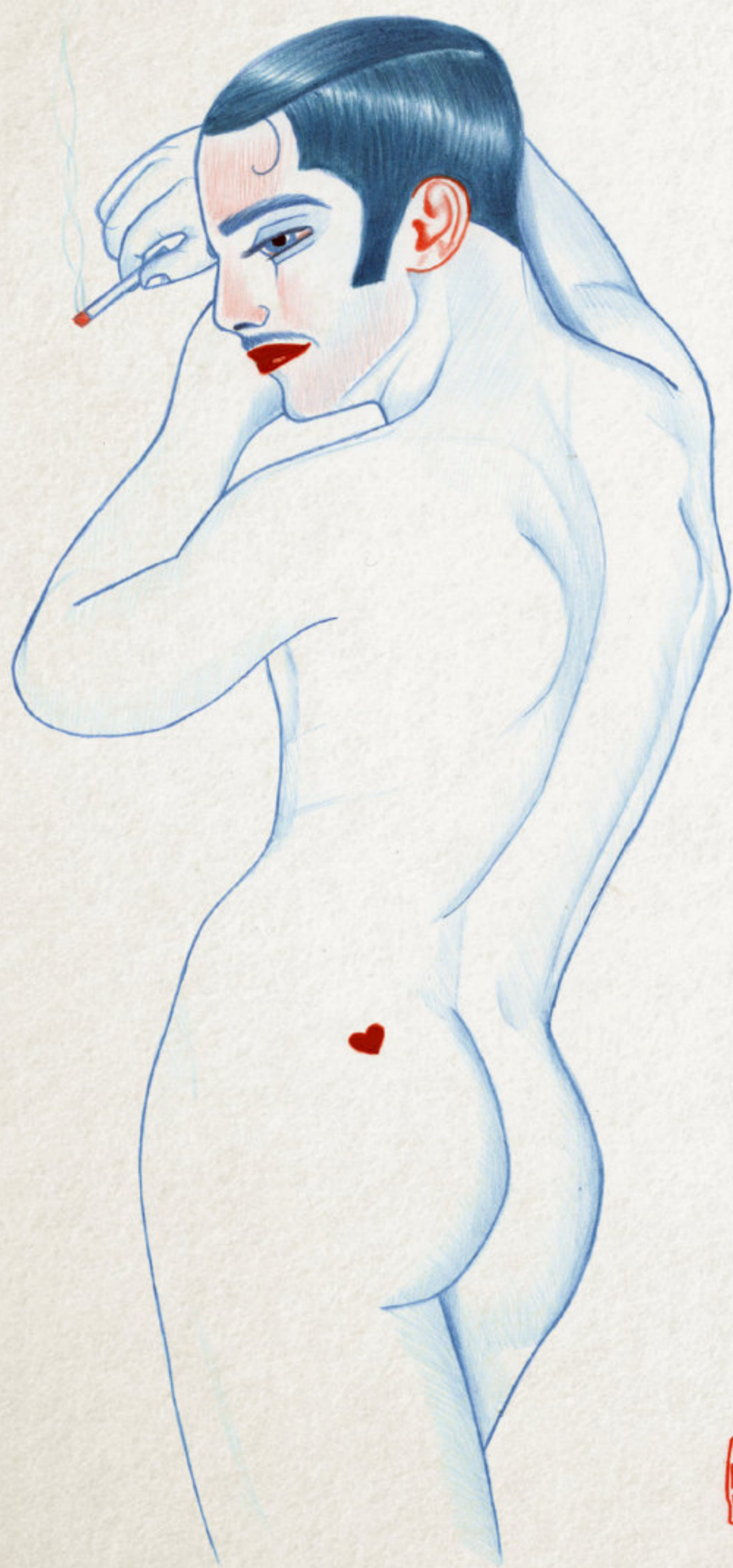


Everest Pencil on paper 21.0 cm × 29.7 cm



Fairy tale
Pencil and guache 21.0 cm × 29.7 cm





Vintage
Pencil on paper 21.0 cm × 29.7 cm



Juice machine

Oil on paper 21.0 cm × 29.7 cm





Narciso

Pencil on paper 21.0 cm x 29.7 cm



Jester

Pencil on paper 21.0 cm × 29.7 cm

©VILELA VALENTIN

FACEBOOK.COM/VILELA.VALENTINFRANZINIART

WAVELENGTH
VILELA

SPRING



7/15

None of the images, designs, logos and writing material in this publication belong to the public domain. All the artistic work are Copyright by their legal owners © 2015 and it is used under respective permission of each artist for this publication only.
Copying, altering, displaying or redistribute any of the artwork contained in this publication, in any format or any medium is strictly PROHIBITED © 2015.

